



Maximum Performance

EXPERT RESOURCES = EXPERT SOLUTIONS

Partnering with UniMac on your total gear-cleaning solution brings a host of advantages to your department and delivers peace of mind that only a laundry expert can provide.

FireLinc™

CLEANER GEAR. SPOTLESS DATA. ZERO HASSLE.

UniMac's FireLinc™ system gives departments a high-power tool that makes record keeping as simple as a few button pushes and a scan of the PPE's bar code. Best of all, data is safely stored in the cloud and easily accessible from the app, ensuring your department always has a record that verifies staff is washing gear in accordance with established procedures.



Sort by equipment ID, location and who completed wash



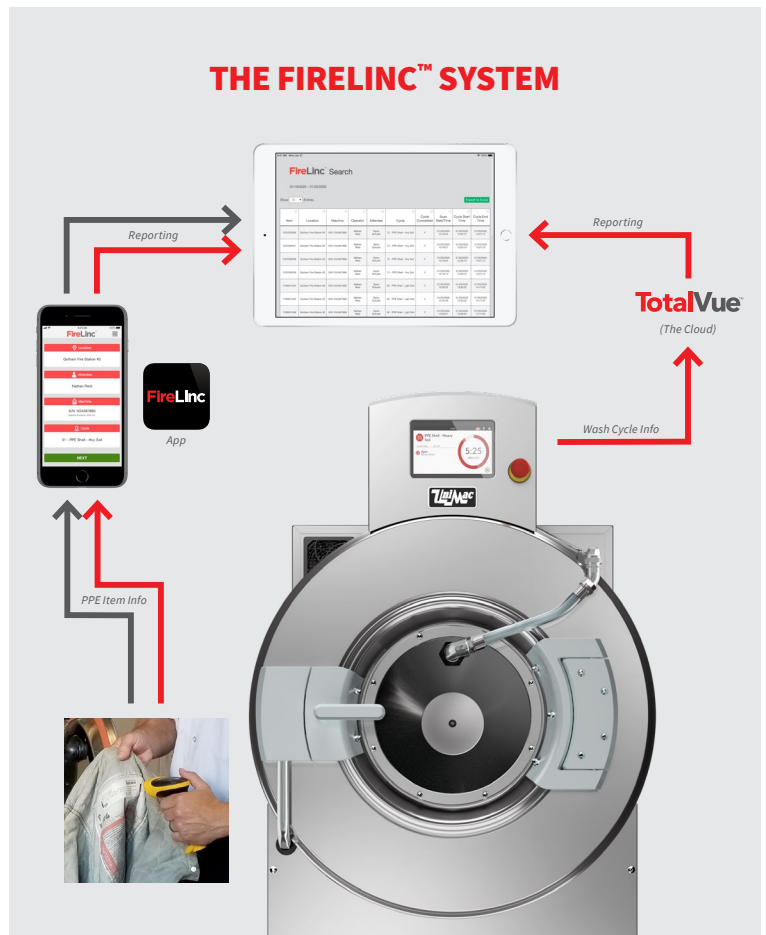
See what machine – and which cycle – was used



Export wash history to spreadsheet for easy auditing



Sync with your inventory tracking system

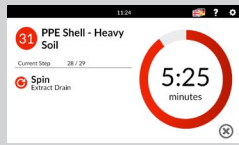


➡ **BASIC:** This provides PPE data tracking only. This does not include washer data.

➡ **FULL:** This report includes the washer data needed to provide advanced cleaning record keeping for NFPA 1850.

UW POCKET HARDMOUNT WASHER-EXTRACTORS

For the ultimate in cleaning and ease of use, the UW range of washer-extractors deliver. The UniLinc™ Touch control employs a graphical display and real words to ensure every member of the department selects the proper cycle, while OPTIspray™ offers next-level rinsing to force dangerous contaminants off the load and down the drain.



UNILINC™ TOUCH CONTROL

Intuitive Full Color Display



CUSTOM FIRE INDUSTRY

Pre-Programmed Cycles

FIRELINC™

Reporting

TEMPERATURE CONTROLLED FILL

For Safe and Effective Washing of PPE

100 G-FORCE SPIN SPEED

for Safe and Effective Washing of PPE

FASTER

Cycle Times

OPTISPRA™

Rinsing Technology

INDUSTRIAL

Built to Last with Constant Use

NFPA 1850 COMPLIANT

FIREFIGHTER'S PPE DRYING CABINET

The Firefighter's Personal Protective Equipment (PPE) Drying Cabinet provides fire stations the means to effectively, efficiently and safely dry protective gear – returning gear back to service quickly.



M SERIES CONTROL

Manages Drying Time and Temperature



FIVE PRE-PROGRAMMED

Standard Drying Cycles

FAST & SAFE DRYING

Returning Your Gear to Service Quickly

OUTDOOR VENTILATION

for Safe Removal of Residual Toxic Vapors

6 FULL SETS OF TURNOUT GEAR

15 Boots/Gloves Capacity

UNIQUE HANGER DESIGN

for Maximum Water Removal

OPTIONAL UTILITY SHELF

Fast Drying of Other Equipment Including Fire Hoses

180° DOOR OPEN ANGLE

for Easy, Unobstructed Access

NFPA 1850 COMPLIANT